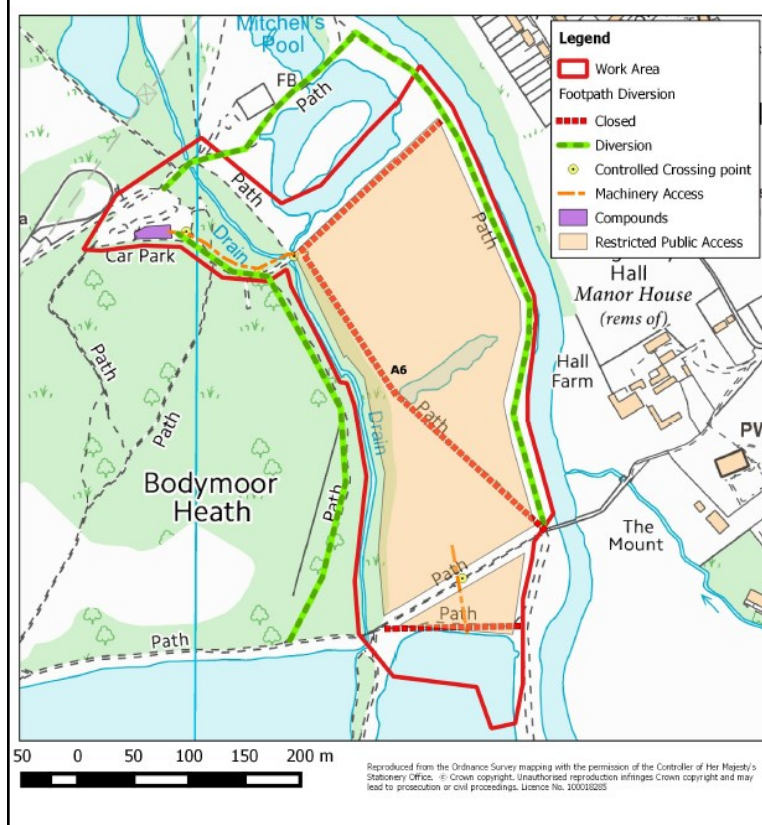


The **Community Wetlands** project is one of a series of projects being carried out by the Tame Valley Wetlands Landscape Partnership Scheme during 2014-2018. The project will create a space to **connect** both people and wildlife. Led by Warwickshire Wildlife Trust, the Scheme has a vision to 'create a wetland landscape rich in wildlife and accessible to all'.

Restricted Access for Public Safety

During the earthworks the shaded area including the permissive footpaths across it, will be closed. A footpath diversion will be in place and will be detailed on footpath marker posts.

CAUTION: Vehicles will need to cross some open footpaths using a controlled crossing point to ensure public safety.



For more information contact :-

T: 01675 470917

E: enquiries@tamevalleywetlands.co.uk

W: www.tamevalleywetlands.co.uk

ADVANCE NOTICE

COMMUNITY WETLANDS

What are we doing?

We will create an exciting outdoor space which will benefit wetland wildlife and the local community by:-

- ⇒ Extending Hall pond
- ⇒ Restoring the floodplain meadow
- ⇒ Building an artificial sand martin bank
- ⇒ Creating a new reedbed with connected scrapes and ditches
- ⇒ Installing a raised, wildlife viewing platform
- ⇒ Providing space for outdoor education
- ⇒ Installing a pond dipping platform

Why are we doing it?

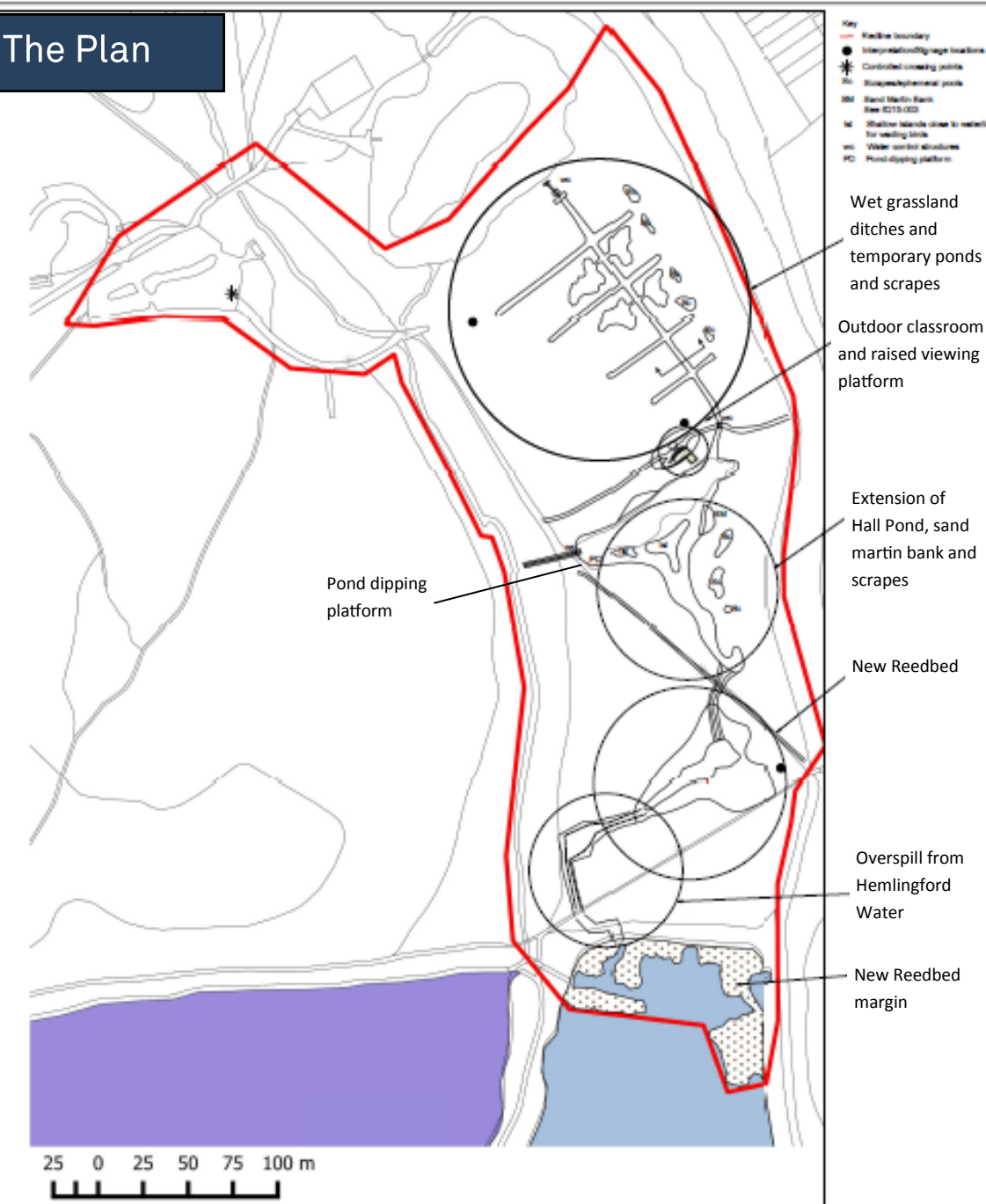
The new wetland will connect valuable habitat within the Tame Valley corridor, for important wetland priority species such as Bittern, Snipe, Otter and Water Vole.

The space will allow people to connect with nature and enjoy wildlife watching from a vantage point or by getting up close with pond life, complemented by informative interpretation.

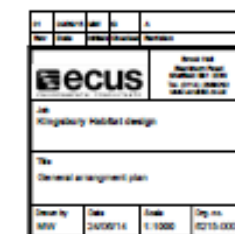
When will it happen?

Earthworks will start in **January 2016** for 4-5 weeks (weather permitting). Installation of platforms will take place in February. Planting will commence in March.

The Plan



This project is being delivered in partnership by:-



Supported by

The Howard Victor Skan Charitable Trust

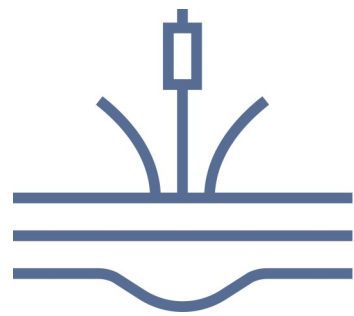


Building communities. Transforming lives.



Supported by
The National Lottery
through the Heritage Lottery Fund

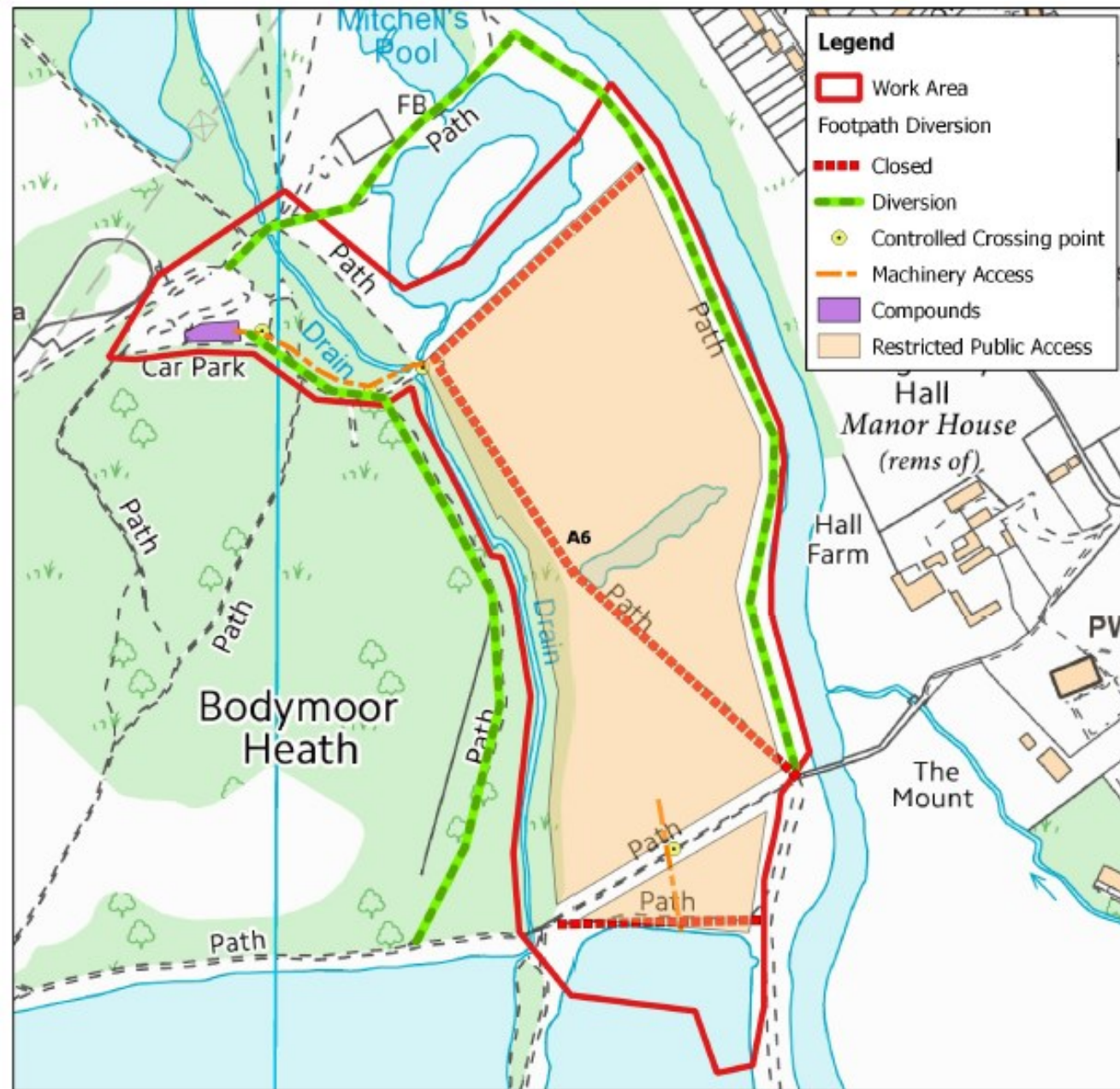




Tame
Valley
Wetlands

COMMUNITY WETLANDS PROJECT

Working in partnership



Reproduced from the Ordnance Survey mapping with the permission of the Controller of Her Majesty's Stationery Office. © Crown copyright. Unauthorised reproduction infringes Crown copyright and may lead to prosecution or civil proceedings. Licence No. 100018285

The **Community Wetlands** project is one of a series of projects being carried out by the Tame Valley Wetlands Landscape Partnership Scheme during 2014-2018. The project will create a space to **connect** both people and wildlife. Led by Warwickshire Wildlife Trust, the Scheme has a vision to 'create a wetland landscape rich in wildlife and accessible to all'.

What are we doing?

We are creating an exciting outdoor space which will benefit wetland wildlife and the local community. To carry out the earthworks, we will need to restrict access to the working area.

When will the work start?

January 2016

How long will restrictions be in place?

4-5 weeks (weather permitting)

Restricted Areas and Footpath Diversion

Tracked excavators and dumper trucks will be used to carry out the earthworks to create the new habitat areas. During this time, the access into the old football pitch site (shaded area) will be restricted. The footpaths transecting the working area (red dashed line) will be closed temporarily and a diversion signposted around the edge of the work area (shown by the green dashed line).

Controlled crossing points

Machinery will need to cross and use Rights of Way footpaths at two points near Far Leys Car Park and Hemlingford Water (highlighted by the orange dashed line). To ensure the paths are kept open to the public, banksman will control the crossing points.

We thank-you for your patience

For more information, contact the Tame Valley Wetlands Office:

T: 01675 470917 E: enquiries@tamevalleywetlands.co.uk W: www.tamevalleywetlands.co.uk

