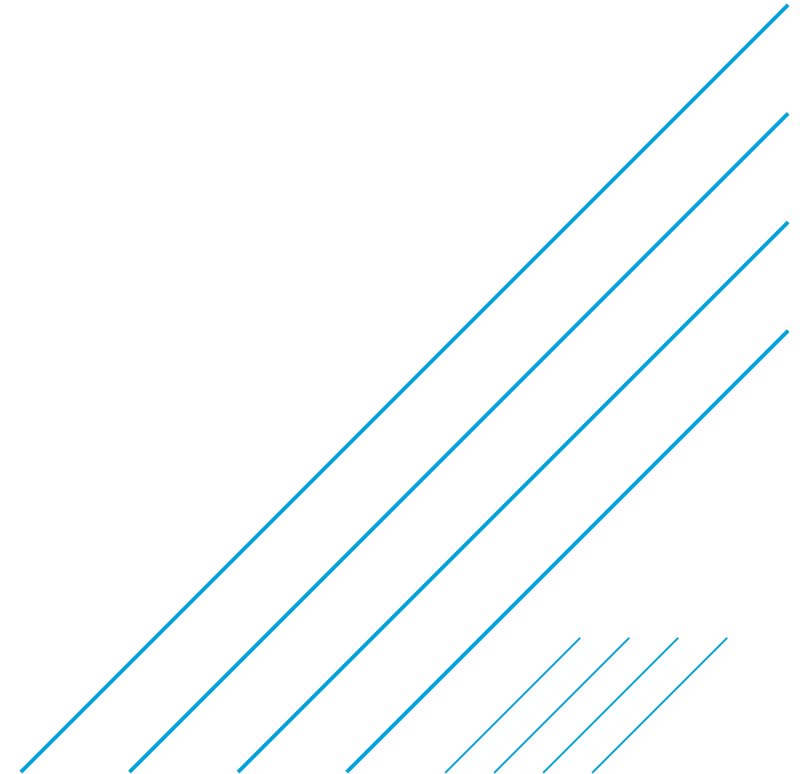


Appendix B

Masterplan



Appendix B

The maps and associated attributes for each of the Opportunity Sites are presented over the following pages. The meaning of the attributes used in these tables are set-out below.

Priority Objective

Whilst other objectives and opportunities will exist at all locations, the focus for potential interventions on a specific site has been identified to enable the targeting of interventions where they will help achievement of the Vision and Strategic Objectives and to enable a lead stakeholder to be identified.

Objectives include:

- **Accessibility:** Improving site access at specific locations, taking into account matters such as the topography, ground conditions and the presence or need for of any steps/ ramps/handrails/gates.
- **Biodiversity:** The ecological value which could be improved by enhancing habitats.
- **Health and Wellbeing:** The potential benefit from improved exercise opportunities and access to fresh air and green spaces, which can have both physical and mental health benefits.
- **Interpretation:** Improving how easy it is to understand a space and what its purpose/ identity/history is.
- **Sense of place:** Improving the character of a space and how it relates to its surroundings, place specific proposals that provide or enhance local identity.
- **Wayfinding:** Improving the ease of navigation of the site through improved views, landmarks and signage.
- **Flood defence:** Opportunity to create/enhance flood defence within vulnerable areas.
- **Heritage:** Maintaining and enhancing the heritage of a site to enhance a sense of place and create more attractive and interesting places to visit.
- **Community:** Increasing the opportunity for communities to come together through easily accessible and usable spaces, whilst potentially creating opportunities for community participation.

Ease of Delivery

How easy will it be to deliver the objective and are there any barriers such as; difficult access, existing infrastructure, difficult topography or difficult ground conditions:

- **Easy:** No barriers to delivery.
- **Medium:** Some barriers, but not too difficult.
- **Hard:** Some difficult barriers to overcome.

Capital Cost

The cost it will take to deliver the objective:

- **Low:** Under £10,000
- **Medium:** £10,000-£100,000
- **High:** Above £100,000

Maintenance Implications

How will the maintenance be implicated as a result of delivering the objective:

- **Decrease:** The maintenance will be reduced as a result of the objective.
- **No Change:** No change to the level of maintenance though operations may be slightly different.
- **Increase:** Increased level of maintenance as a result of delivering the objective.

Time Horizon

How long it will take to deliver the objective:

- **Short:** 1-3 years
- **Medium:** 4-7 years
- **Long:** 8-10 years

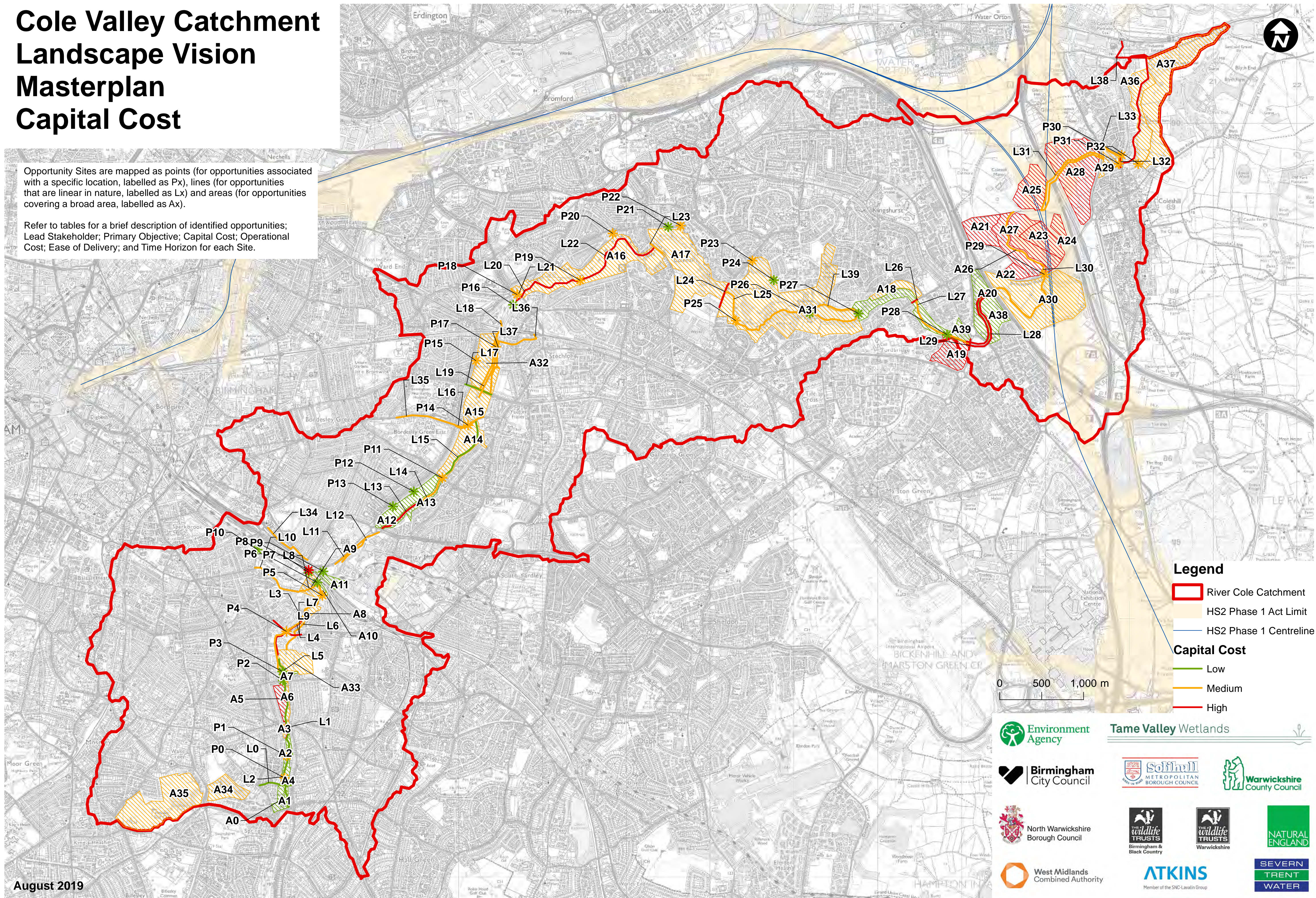
Lead Stakeholder

Who is best-placed to lead on coordination, funding or delivery of the primary objective and items described for each Opportunity Site.

Cole Valley Catchment Landscape Vision Masterplan Capital Cost

Opportunity Sites are mapped as points (for opportunities associated with a specific location, labelled as Px), lines (for opportunities that are linear in nature, labelled as Lx) and areas (for opportunities covering a broad area, labelled as Ax).

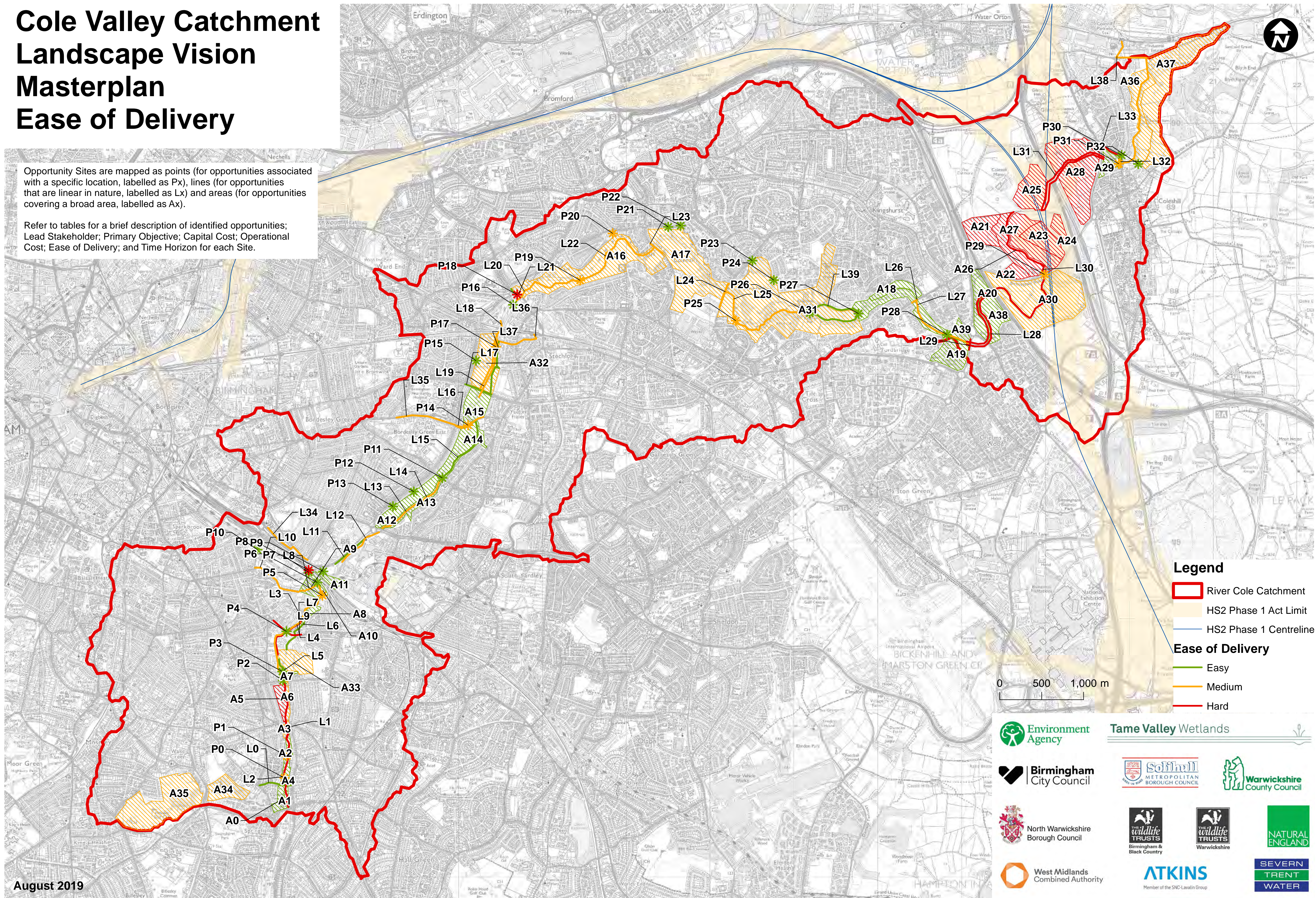
Refer to tables for a brief description of identified opportunities; Lead Stakeholder; Primary Objective; Capital Cost; Operational Cost; Ease of Delivery; and Time Horizon for each Site.



Cole Valley Catchment Landscape Vision Masterplan Ease of Delivery

Opportunity Sites are mapped as points (for opportunities associated with a specific location, labelled as Px), lines (for opportunities that are linear in nature, labelled as Lx) and areas (for opportunities covering a broad area, labelled as Ax).

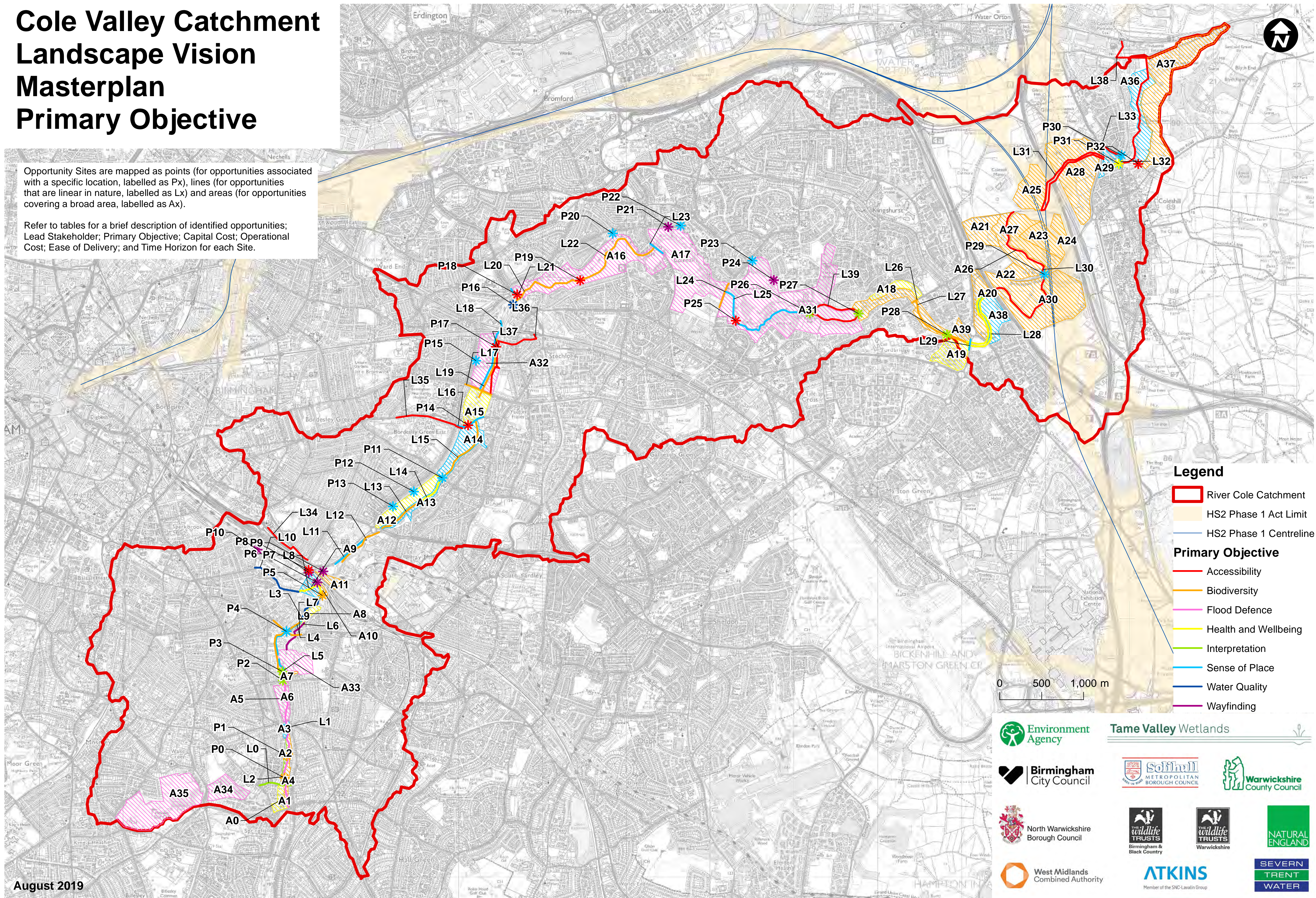
Refer to tables for a brief description of identified opportunities; Lead Stakeholder; Primary Objective; Capital Cost; Operational Cost; Ease of Delivery; and Time Horizon for each Site.



Cole Valley Catchment Landscape Vision Masterplan Primary Objective

Opportunity Sites are mapped as points (for opportunities associated with a specific location, labelled as Px), lines (for opportunities that are linear in nature, labelled as Lx) and areas (for opportunities covering a broad area, labelled as Ax).

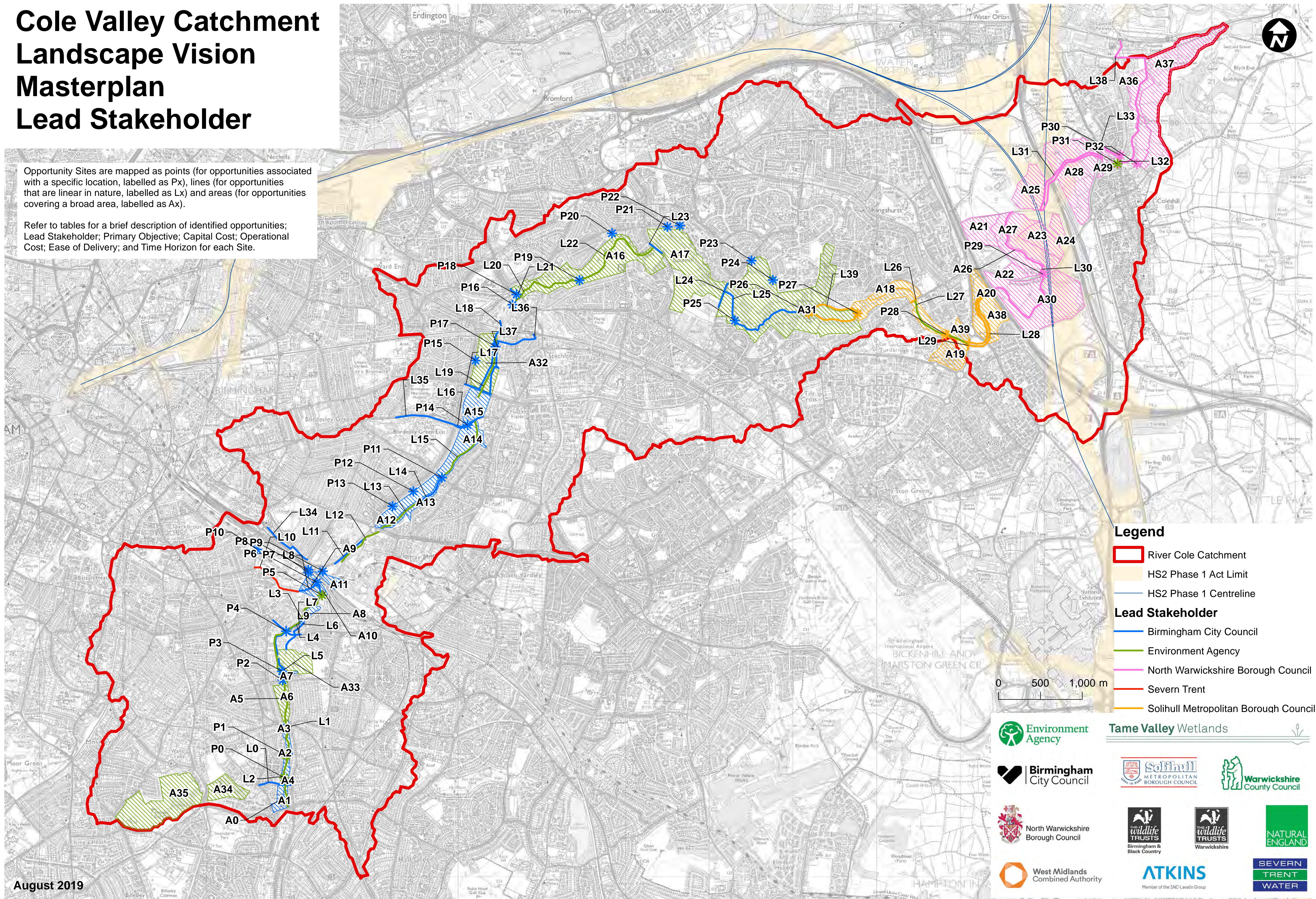
Refer to tables for a brief description of identified opportunities; Lead Stakeholder; Primary Objective; Capital Cost; Operational Cost; Ease of Delivery; and Time Horizon for each Site.



Cole Valley Catchment Landscape Vision Masterplan Lead Stakeholder

Opportunity Sites are mapped as points (for opportunities associated with a specific location, labelled as Px), lines (for opportunities that are linear in nature, labelled as Lx) and areas (for opportunities covering a broad area, labelled as Ax).

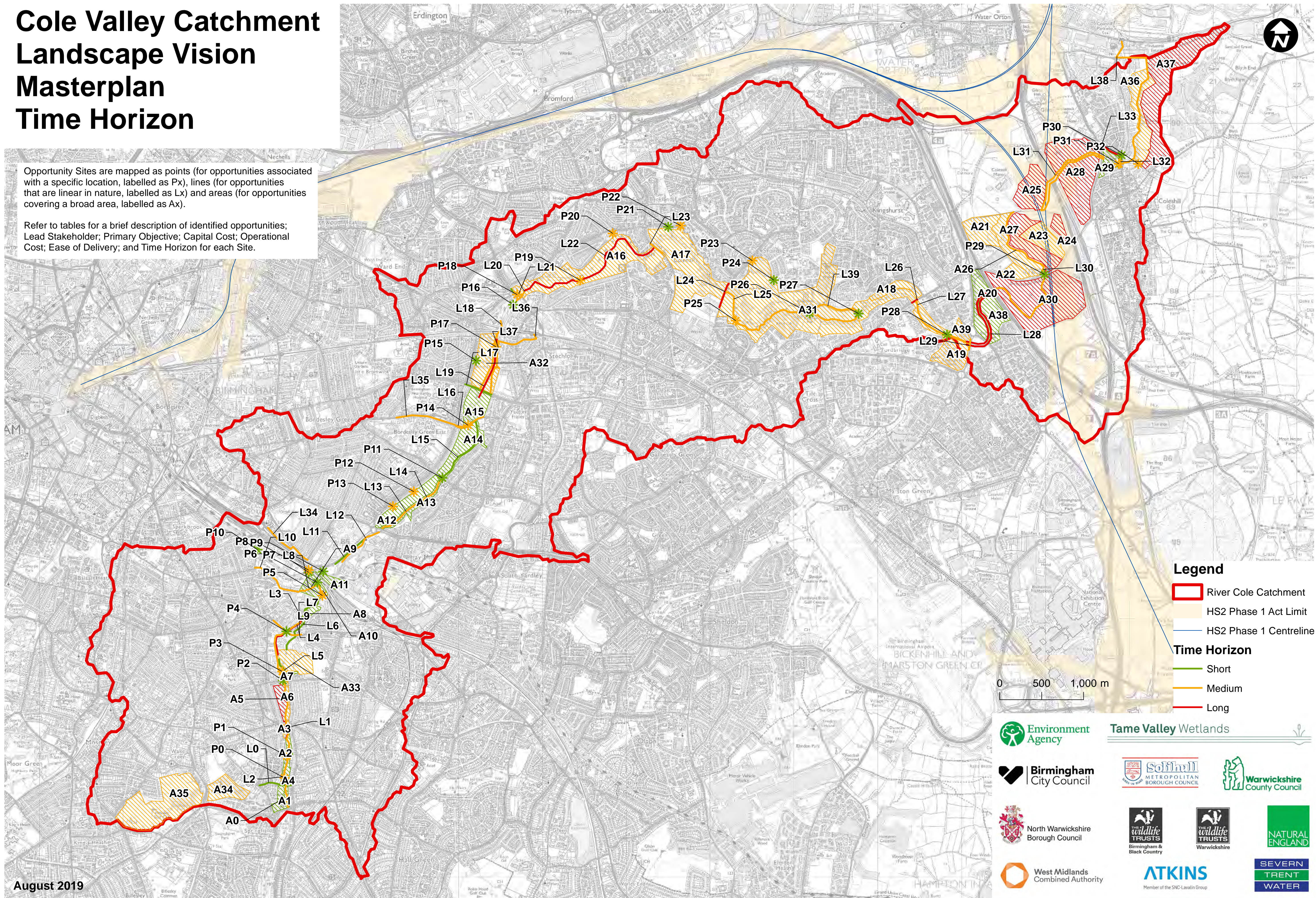
Refer to tables for a brief description of identified opportunities; Lead Stakeholder; Primary Objective; Capital Cost; Operational Cost; Ease of Delivery; and Time Horizon for each Site.



Cole Valley Catchment Landscape Vision Masterplan Time Horizon

Opportunity Sites are mapped as points (for opportunities associated with a specific location, labelled as Px), lines (for opportunities that are linear in nature, labelled as Lx) and areas (for opportunities covering a broad area, labelled as Ax).

Refer to tables for a brief description of identified opportunities; Lead Stakeholder; Primary Objective; Capital Cost; Operational Cost; Ease of Delivery; and Time Horizon for each Site.



Appendix B

Opportunity Site Points

ID	Priority Objective	Description	Ease of Delivery	Capital Cost	Maintenance Implications	Time Horizon	Lead Stakeholder
P0	Biodiversity	Weir removal, retain some form of crossing?	Medium	Medium	Low	Medium	Environment Agency
P1	Biodiversity	Weir removal	Medium	Medium	Low	Medium	Environment Agency
P2	Interpretation	Interpretation/education about habitat/floods	Easy	Low	Low	Short	Birmingham City Council
P3	Interpretation	Interpretation about habitat/flood improvement	Easy	Low	Low	Medium	Birmingham City Council
P4	Sense of Place	Artwork indicating location of River Cole from A41	Easy	Medium	Low	Short	Birmingham City Council
P5	Biodiversity	Weir removal or fish pass	Medium	Medium	Low	Medium	Environment Agency
P6	Wayfinding	Wayfinding to assist with navigating canal/railway	Easy	Low	Low	Short	Birmingham City Council
P7	Wayfinding	Artwork/wayfinding for canal/river/local amenity	Easy	Low	Low	Short	Birmingham City Council
P8	Accessibility	Step free access to/from canal	Hard	High	Low	Medium	Birmingham City Council
P9	Wayfinding	Signage to indicate link to River Cole	Easy	Low	Low	Short	Birmingham City Council
P10	Wayfinding	Promote accessibility to River via canal	Easy	Low	Low	Short	Birmingham City Council
P11	Sense of Place	Gateway artwork alongside road corridor/crossing	Easy	Medium	Low	Short	Birmingham City Council
P12	Sense of Place	Feature, seating and interpretation	Easy	Low	Low	Medium	Birmingham City Council
P13	Sense of Place	Feature, seating and interpretation	Easy	Low	Low	Medium	Birmingham City Council
P14	Accessibility	Improve pedestrian priority at crossing	Medium	Medium	Low	Medium	Birmingham City Council
P15	Sense of Place	Gateway feature/artwork and interpretation	Easy	Medium	Low	Short	Birmingham City Council
P16	Water Quality	Connect waterbody to river	Easy	Low	Low	Short	Birmingham City Council
P17	Accessibility	Footbridge and paths to create circular route	Medium	Medium	Low	Medium	Birmingham City Council
P18	Accessibility	New crossing to create shorter route/avoid r-about	Hard	Medium	Low	Medium	Birmingham City Council
P19	Accessibility	Bridge to link to school/facilitate circular route	Medium	Medium	Low	Medium	Birmingham City Council
P20	Sense of Place	Gateway feature/artwork and interpretation	Medium	Medium	Low	Medium	Birmingham City Council
P21	Wayfinding	Wayfinding showing routes and biodiversity	Easy	Low	Low	Short	Birmingham City Council
P22	Sense of Place	Gateway feature/artwork and interpretation	Easy	Medium	Low	Medium	Birmingham City Council
P23	Sense of Place	Gateway feature/artwork linking to River Cole	Easy	Medium	Low	Medium	Birmingham City Council
P24	Wayfinding	Wayfinding showing routes and biodiversity	Easy	Low	Low	Short	Birmingham City Council
P25	Accessibility	Create footbridge over river for circular route	Medium	Medium	Low	Medium	Birmingham City Council
P26	Interpretation	Focus on heritage and biodiversity information	Easy	Low	Low	Short	Solihull Metropolitan Borough Council
P27	Interpretation	Focus on heritage and biodiversity information	Easy	Low	Low	Short	Solihull Metropolitan Borough Council
P28	Interpretation	River and biodiversity information	Easy	Low	Low	Short	Solihull Metropolitan Borough Council
P29	Sense of Place	Artwork visible to drivers along Birmingham Road	Medium	Medium	Low	Short	North Warwickshire Borough Council
P30	Sense of Place	Artwork and interpretation around road junction	Easy	Medium	Low	Short	North Warwickshire Borough Council
P31	Health and Wellbeing	Bank reprofiling and ford for waterside access	Medium	Medium	Low	Medium	Environment Agency
P32	Accessibility	Improve quality, width and accessibility of bridge	Easy	Medium	Low	Medium	North Warwickshire Borough Council

Appendix B

Opportunity Site Lines

ID	Priority Objective	Description	Ease of Delivery	Capital Cost	Maintenance Implications	Time Horizon	Lead Stakeholder
L0	Interpretation	Signage and interpretation of the ford	Easy	Low	Low	Short	Birmingham City Council
L1	Sense of Place	Remove retaining structures, re-grade river banks	Hard	High	Medium	Long	Environment Agency
L2	Flood Defence	'En-main' River Cole EA from BCC, swap with other	Hard	Low	Low	Medium	Environment Agency
L3	Sense of Place	Create riverside walk	Hard	High	Medium	Long	Birmingham City Council
L4	Biodiversity	Soften hard river edges	Medium	Medium	Medium	Medium	Environment Agency
L5	Sense of Place	Improve surfacing to increase accessibility	Easy	Low	Low	Short	Birmingham City Council
L6	Wayfinding	Improve signage and amenity away from river	Easy	Medium	Low	Short	Birmingham City Council
L7	Biodiversity	A41 narrowing, green central verge, GI retrofit	Hard	High	Medium	Medium	Birmingham City Council
L8	Health and Wellbeing	Facilitate access to water edge for education/play	Medium	Medium	Medium	Medium	Birmingham City Council
L9	Water Quality	Clear river of debris, habitat management	Medium	Medium	Low	Short	Environment Agency
L10	Water Quality	Fix missed connections and other quality issues	Medium	Medium	Low	Medium	Severn Trent
L11	Sense of Place	Vegetative screening of A45	Easy	Medium	Medium	Short	Birmingham City Council
L12	Biodiversity	River channel improvements	Medium	Medium	Low	Medium	Environment Agency
L13	Biodiversity	River re-alignment and bank re-profiling	Medium	High	Low	Medium	Environment Agency
L14	Health and Wellbeing	River access and dipping areas for use by schools	Medium	Medium	Low	Medium	Birmingham City Council
L15	Biodiversity	Habitat improvement	Easy	Low	Low	Short	Environment Agency
L16	Sense of Place	Improve quality of parking arrangement	Medium	Medium	Low	Medium	Birmingham City Council
L17	Biodiversity	Wildflower planting along central reserve	Easy	Low	Low	Short	Birmingham City Council
L18	Sense of Place	Accessible route along river and under railway	Medium	Medium	Low	Medium	Birmingham City Council
L19	Biodiversity	Re-alignment/channel improvement/bank re-profiling	Medium	Medium	Low	Long	Environment Agency
L20	Biodiversity	Remove retaining structures, re-grade river banks	Medium	High	Medium	Medium	Environment Agency
L21	Sense of Place	Improved frontage to A4040	Easy	Medium	Medium	Short	Birmingham City Council
L22	Biodiversity	Re-alignment/channel improvement/bank re-profiling	Medium	High	Medium	Long	Environment Agency
L23	Sense of Place	Artwork/interpretation along Cole Hall Lane	Medium	Medium	Low	Medium	Birmingham City Council
L24	Biodiversity	Green central reserve along Lea Ford Road	Medium	High	Medium	Long	Birmingham City Council
L25	Sense of Place	Facilitate access to water edge for education/play	Medium	Medium	Low	Medium	Birmingham City Council
L26	Biodiversity	Green central reserve along Cooks Lane	Medium	High	Medium	Long	Solihull Metropolitan Borough Council
L27	Biodiversity	Re-alignment/channel improvement/bank re-profiling	Medium	Medium	Medium	Medium	Environment Agency
L28	Health and Wellbeing	Circular accessible/cycle route around River	Hard	High	Low	Long	Solihull Metropolitan Borough Council
L29	Sense of Place	Green the painted verges along Moorend Avenue	Hard	High	Medium	Medium	Solihull Metropolitan Borough Council
L30	Accessibility	Create new right of way along River Cole	Hard	Medium	Medium	Medium	North Warwickshire Borough Council
L31	Accessibility	Create new right of way along River Cole	Hard	Medium	Medium	Medium	North Warwickshire Borough Council
L32	Sense of Place	New footbridge to enhance setting of monument	Medium	High	Low	Medium	North Warwickshire Borough Council
L33	Accessibility	Improve parking and road safety	Hard	Medium	Low	Long	North Warwickshire Borough Council
L34	Accessibility	Cycle route link to Small Heath Park and Station	Medium	Medium	Low	Medium	Birmingham City Council
L35	Accessibility	Cycle route link to Hospital and local schools	Medium	Medium	Low	Medium	Birmingham City Council
L36	Accessibility	Cycle route link to Stechford Station	Medium	Medium	Low	Medium	Birmingham City Council
L37	Accessibility	Cycle route along east bank to residential area	Easy	Medium	Low	Medium	Birmingham City Council
L38	Accessibility	Cycle route along river to Coleshill Parkway	Medium	High	Low	Medium	North Warwickshire Borough Council
L39	Accessibility	Accessible circular route around Babbs Mill Lake	Easy	Medium	Low	Medium	Solihull Metropolitan Borough Council

Appendix B

Opportunity Site Areas

ID	Priority Objective	Description	Ease of Delivery	Capital Cost	Maintenance Implications	Time Horizon	Lead Stakeholder
A0	Health and Wellbeing	Creation of a River Cole Hub	Easy	Low	Medium	Short	Birmingham City Council
A1	Biodiversity	Habitat management	Easy	Low	Low	Short	Birmingham City Council
A2	Interpretation	River and biodiversity interpretation, bird hides	Easy	Low	Low	Short	Birmingham City Council
A3	Sense of Place	Gateway features, crossing, parking, furniture	Medium	Medium	Low	Medium	Birmingham City Council
A4	Biodiversity	Habitat management	Easy	Low	Low	Short	Birmingham City Council
A5	Flood Defence	Flood embankment around allotments	Hard	High	Low	Long	Environment Agency
A6	Flood Defence	Creation of overflow pools with habitat	Medium	Medium	Low	Medium	Environment Agency
A7	Biodiversity	Woodland planting and slow run-off	Easy	Low	Low	Short	Birmingham City Council
A8	Health and Wellbeing	Natural play features and health walk route	Easy	Medium	Low	Short	Birmingham City Council
A9	Sense of Place	Management, interpretation, school engagement	Easy	Medium	Medium	Short	Birmingham City Council
A10	Biodiversity	Habitat management	Easy	Low	Low	Short	Birmingham City Council
A11	Biodiversity	Habitat management	Easy	Low	Low	Short	Birmingham City Council
A12	Health and Wellbeing	Waymarked health walks, arrange Park Run?	Easy	Low	Low	Short	Birmingham City Council
A13	Sense of Place	Habitat management/views to river/flood storage	Easy	Low	Low	Short	Birmingham City Council
A14	Sense of Place	Wayfinding/habitat management/flood storage	Easy	Medium	Medium	Short	Birmingham City Council
A15	Health and Wellbeing	Wayfinding/habitat management/flood storage	Easy	Medium	Medium	Short	Birmingham City Council
A16	Flood Defence	Flood storage area and habitat management	Medium	Medium	Low	Medium	Environment Agency
A17	Flood Defence	Flood storage area and habitat management	Medium	Medium	Low	Medium	Environment Agency
A18	Health and Wellbeing	Natural play features and health walk route	Easy	Medium	Low	Medium	Solihull Metropolitan Borough Council
A19	Health and Wellbeing	Creation of Hub/greenspace uplift/flood storage	Easy	High	Medium	Medium	Solihull Metropolitan Borough Council
A20	Biodiversity	Habitat management	Easy	Low	Low	Short	Solihull Metropolitan Borough Council
A21	Biodiversity	Woodland creation	Hard	High	High	Medium	North Warwickshire Borough Council
A22	Biodiversity	Woodland creation	Hard	High	High	Medium	North Warwickshire Borough Council
A23	Biodiversity	Woodland creation	Hard	High	High	Medium	North Warwickshire Borough Council
A24	Biodiversity	Woodland creation	Hard	High	High	Long	North Warwickshire Borough Council
A25	Biodiversity	Woodland creation	Hard	High	High	Long	North Warwickshire Borough Council
A26	Biodiversity	Riparian habitat creation	Hard	High	High	Medium	North Warwickshire Borough Council
A27	Biodiversity	Riparian habitat creation	Hard	High	High	Long	North Warwickshire Borough Council
A28	Biodiversity	Woodland and other habitat creation	Hard	High	High	Long	North Warwickshire Borough Council
A29	Sense of Place	Cole End Park open space improvements	Easy	Medium	Medium	Short	North Warwickshire Borough Council
A30	Biodiversity	Improve habitat and strengthen hedgerows	Medium	Medium	Medium	Long	North Warwickshire Borough Council
A31	Flood Defence	Create flood storage area	Medium	Medium	Low	Medium	Environment Agency
A32	Flood Defence	Create flood storage area	Medium	Medium	Low	Medium	Environment Agency
A33	Flood Defence	Create flood storage area	Medium	Medium	Low	Medium	Environment Agency
A34	Flood Defence	Create flood storage area	Medium	Medium	Low	Medium	Environment Agency
A35	Flood Defence	Create flood storage area	Medium	Medium	Low	Medium	Environment Agency
A36	Sense of Place	Improve access and amenity along river corridor	Medium	Medium	Medium	Medium	North Warwickshire Borough Council
A37	Biodiversity	Biodiversity enhancement following mineral works	Medium	Medium	Medium	Long	North Warwickshire Borough Council
A38	Sense of Place	Tree planting, interpretation, paths, meadows	Easy	Low	Low	Short	Solihull Metropolitan Borough Council
A39	Biodiversity	Habitat management and creation	Easy	Low	Low	Medium	Solihull Metropolitan Borough Council