



The Tame Valley Wetlands Landscape Partnership is led by Warwickshire Wildlife Trust and includes a wide variety of charities, local groups, councils and statutory bodies:



Discover a hidden landscape... on your doorstep

Located between Birmingham and Tamworth, in North Warwickshire and South-east Staffordshire, lies the Tame Valley Wetlands – a unique and hidden landscape on the doorstep of over a million people.

The area has a wealth of wildlife and heritage interest, with the River Tame, its floodplain and the canal network at its heart. The Tame Valley Wetlands Landscape Partnership works to protect and enhance the area, with the vision of creating a wetland landscape, rich in wildlife and accessible to all. The Partnership is led by Warwickshire Wildlife Trust in partnership with a wide variety of organisations including charities, local groups, councils and statutory bodies.

For more information, go to: www.tamevalleywetlands.co.uk

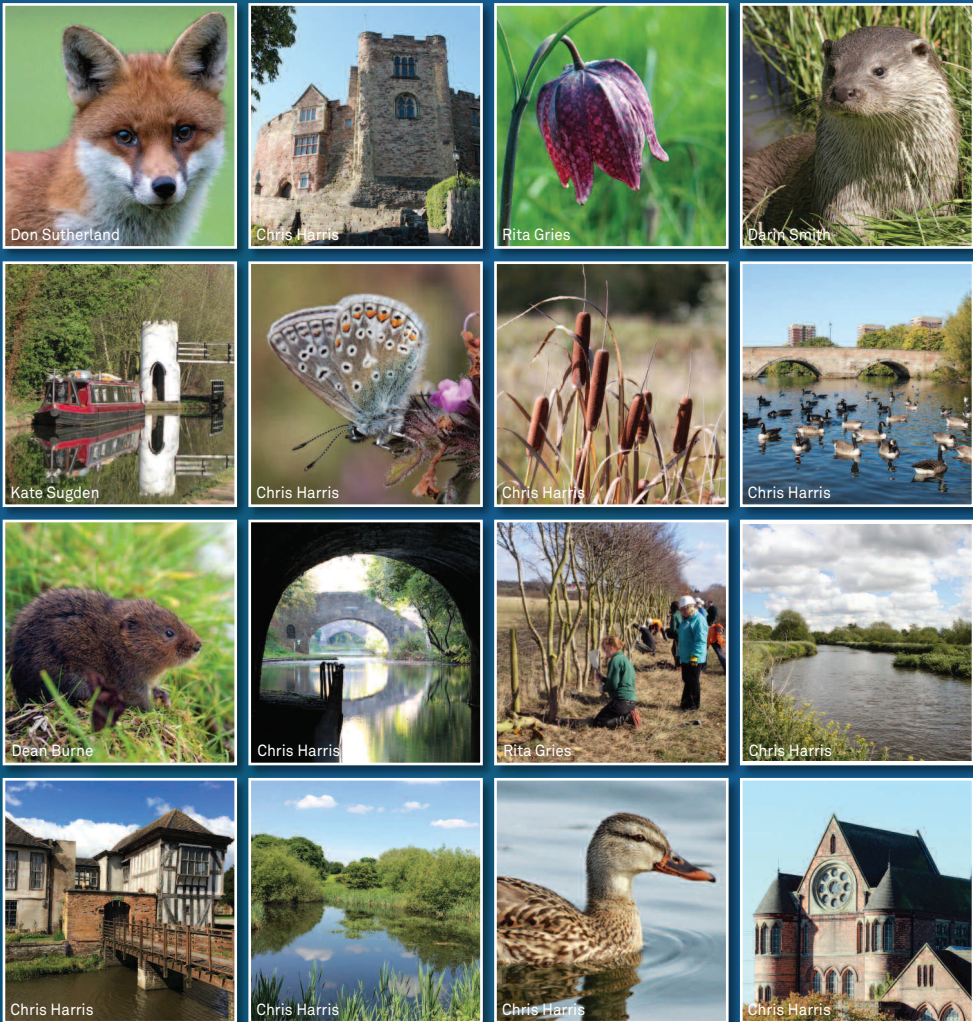
Get involved!

Do you share our vision? Would you like to get involved? There are plenty of ways for you to help us, learn new skills and meet new people.

If you'd like to be active and spend time outdoors, you could join our 'TameForce' practical conservation group, or come along to one of our events or activities. Young people can join our youth group, and we also offer bespoke volunteering opportunities for businesses and groups with special needs.

For the full range of volunteering and training opportunities, go to www.tamevalleywetlands.co.uk/get-involved

Discover the Tame Valley Wetlands



Cover photo: Four-spotted chaser (Chris Harris)

For more information visit:

www.tamevalleywetlands.co.uk

- enquiries@tamevalleywetlands.co.uk
- Facebook.com/tamevalleywetlands
- @thetamevalley
- 01675 470917



Learn, discover, enjoy

